

the collection



COLLECTIONCOLECCIONKOLLEKTIONCOLLECTIECOLLECTIONCOLECCIONKOLLEKTIONCOLLECTIECOLLECTIONCOLECCIONKOLLEKTIONCOLLECTIECOLLECTIONCOLECCIONKOLLEKTIONCOLLECTIE

mFLOR™



New Contract Stone Camarque – see page 16

MFLOR 25-05 Construction Specifications	
Floorcovering to EN 649	Heterogeneous PVC
ISO 14001	✓
ISO 9001	✓
EN 429 Thickness of wear layer	0.55mm + Polyurethane
EN 428 Total thickness	2.5mm
EN 430 Weight	ca. 4.500 g/m ²
EN 434 Dimensional stability	✓
EN 1081 Surface resistance	Horizontal: 5 x 10 ¹² Ω Vertical: 2 x 10 ¹² Ω
EN 1815 Anti-static performance	Rubber test shoe: -1.7kV PVC test shoe: -1.2kV
DIN 51953 Electrical resistance	2.6 x 10 ¹¹ Ω
ISO 140-8 Sound absorbtion	5 dB
ISO 8302 Thermal resistance	+/- 0.021m ² K/W
DIN 4102 Fire resistance	B1
EN 13501-1	Bfl
EN 433 Point load resistance	0.023mm
EN 425 Castor chair resistance	Suitable
DIN 51130 Slip resistance	R9 dry
EN 685 Usage category	42 – light industrial areas
EN 423/DIN 51958 Resistance to chemicals	Class O, Good
EN 435A Flexibility	20mm
EN 71 Toxicity	Non-toxic
EN ISO 105 B02 Resistance to fading	Note 7/8 – good
Underfloor heating	30° C ✓

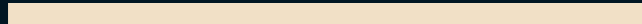
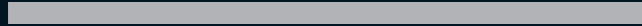


MFLOR 20-03 (20-02) Construction Specifications	
Floorcovering to EN 649	Heterogeneous PVC
ISO 14001	✓
ISO 9001	✓
EN 429 Thickness of wear layer	0.3mm (0.2mm)
EN 428 Total thickness	2.0mm
EN 430 Weight	ca. 3.600 g/m ²
EN 434 Dimensional stability	✓
EN 1081 Surface resistance	Horizontal: 5 x 10 ¹² Ω Vertical: 2 x 10 ¹² Ω
EN 1815 Anti-static performance	Rubber test shoe: -1.7kV PVC test shoe: -1.2kV
DIN 51953 Electrical resistance	2.6 x 10 ¹¹ Ω
ISO 140-8 Sound absorbtion	5 dB
ISO 8302 Thermal resistance	+/- 0.021m ² K/W
DIN 4102 Fire resistance	B1
EN 13501-1	Bfl
EN 433 Point load resistance	0.03mm
EN 425 Castor chair resistance	Suitable
DIN 51130 Slip resistance	R9 dry
EN 685 Usage category	31 – commercial areas (22 home use)
EN 423/DIN 51958 Resistance to chemicals	Class O, Good
EN 435A Flexibility	20mm
EN 71 Toxicity	Non-toxic
EN ISO 105 B02 Resistance to fading	Note 7/8 – good
Underfloor heating	30° C ✓

See individual product pages for tile width / length and pack quantities

contents

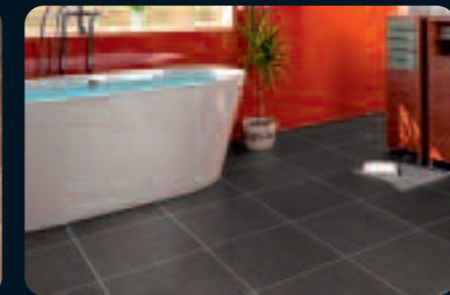
Feature strip inlays	2
20-02 Range:	
Victoria Plank	4
20-03 Range:	
Farmhouse Plank	6
Lignum Plank South	8
Australian Stone	10
25-05 Range:	
Long Plank	12
Authentic Oak	14
Contract Stone	16
Contract Concrete	18
Semaphore Plate	20
MFLOR Studio:	22
Care and maintenance	23

Feature Strip Inlays Special inlays are available for all MFLOR products. Available in the following colours and sizes, they can add a distinctive new look to your flooring.

-  **BEIGE** 2.8mm and 3.4mm
-  **GREY** 2.8mm and 3.4mm
-  **BROWN** 2.8mm and 3.4mm
-  **BLACK** 2.8mm and 3.4mm



Victoria Plank Messmate with Beige 3.4mm Feature Strip



Contract Stone Anthracite with Grey 3.4mm Feature Strip

20-02

Wohnbereiche Residential areas
Gewerbliche Bereiche Commercial areas
Industrielle Bereiche Light industrial areas

21 22 23 31 32 33 34 41 42 43

20-03

Wohnbereiche Residential areas
Gewerbliche Bereiche Commercial areas
Industrielle Bereiche Light industrial areas

21 22 23 31 32 33 34 41 42 43

25-05

Wohnbereiche Residential areas
Gewerbliche Bereiche Commercial areas
Industrielle Bereiche Light industrial areas

21 22 23 31 32 33 34 41 42 43

ISO 14001
QUALITY SYSTEM

ISO 9001
QUALITY SYSTEM





60111 Messmate



60182 Alpine Ash



65509 Blackbutt



65508 Blue Gum

mFLOR Victoria Plank
2.0mm with 0.2mm wearlayer x 15.24cm x 91.44cm

- Classic Australian Hardwood designs
- Anti-scurf urethane finish
- EN685 usage category 22 – domestic flooring
- Suitable for medium home use
- Quiet, hardwearing & easy to keep clean
- 24 pieces per carton of 3.34 m²
- Suitable for underfloor heating to 30° C
- Very low VOC product for improved internal climate

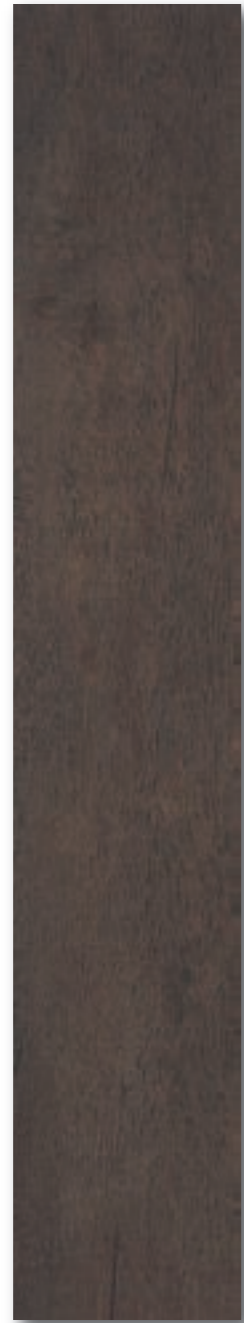


Featured floors: above *Alpine Ash*, right *Blue Gum*





51973 Old Elm



51975 Ebony



51985 Simpoh



52013 Weathered Birch



53016 American Beech

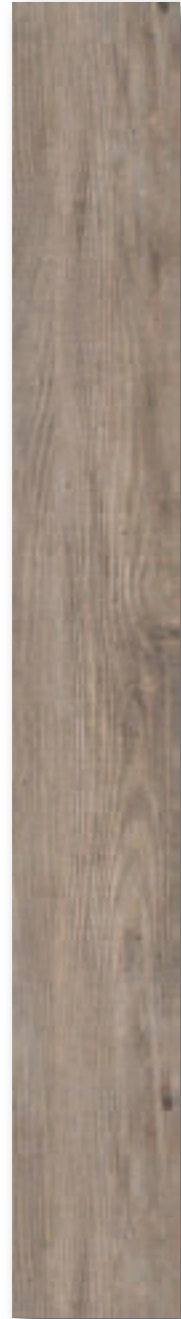
mFLOR Farmhouse Plank
2.0mm with 0.30mm wearlayer x 15.24cm x 91.44cm

- Tropical & European Hardwoods
- Wide plank format, deep emboss
- Anti-scuff urethane finish
- EN685 usage category 31 – heavy home and commercial duty flooring
- Quiet, hardwearing & easy to keep clean
- 24 pieces per carton of 3.34 m²
- Suitable for underfloor heating to 30° C
- Very low VOC product for improved internal climate

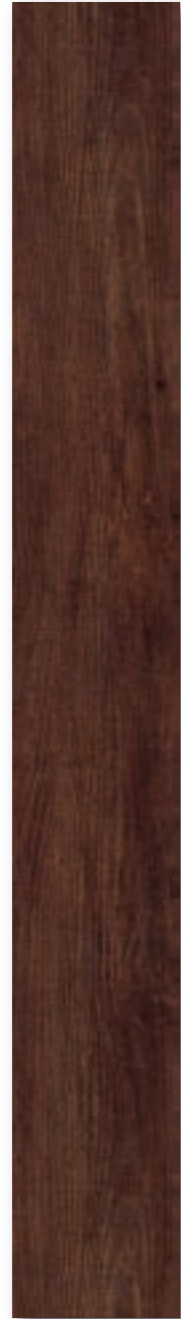


Featured floors: above Old Elm, right American Beech





56177 Limed Pine



56277 Cask Oak



56078 Chestnut



56080 Sussex Oak



56180 Sycamore

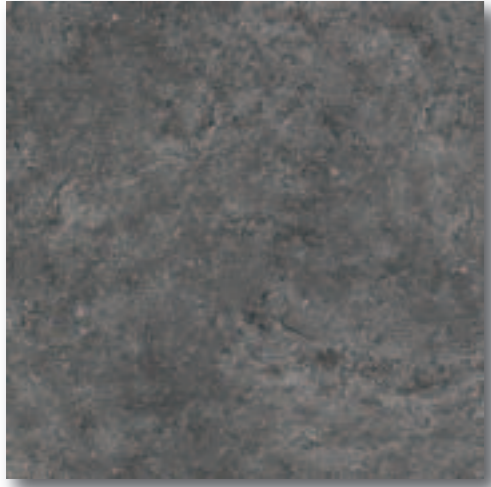
mFLOR Lignum Plank South
2.0mm with 0.30mm wearlayer x 15.24cm x 121.92cm

- Traditional European Hardwoods
- Long plank format
- Anti-scuff urethane finish
- EN685 usage category 31 – heavy home and commercial duty flooring
- Quiet, hardwearing & easy to keep clean
- 24 pieces per carton of 3.34 m²
- Suitable for underfloor heating to 30° C
- Very low VOC product for improved internal climate



Featured floors: above Chestnut, right Sussex Oak

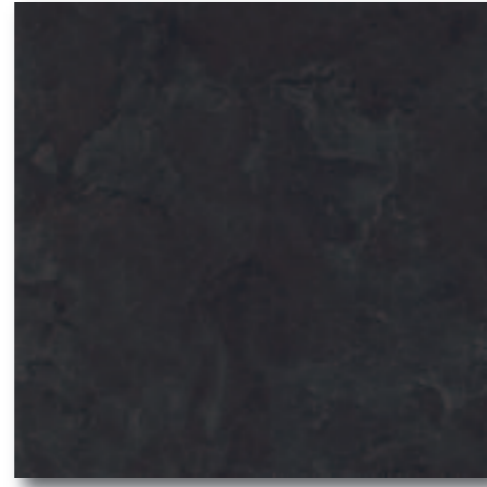




53049 Woodroffe



53045 Ossa



53241 Zeil



55202 Kosciuszko



51104 Bogong



53047 Bartle Frere



52221 Meharry

mFLOR Australian Stone
2.0mm with 0.30mm wearlayer x 45.72cm x 45.72cm

- Australian alluvial stone designs
- Anti-scuff urethane finish
- En 685 usage category 31 – heavy home and commercial duty flooring
- Quiet, hard wearing & easy to keep clean
- 16 pieces per carton of 3.34 m²
- Suitable for underfloor heating to 30°C
- Very low VOC product for improved internal climate



Featured floors: above Zeil with 3.4mm Grey Feature Strip, right Bogong





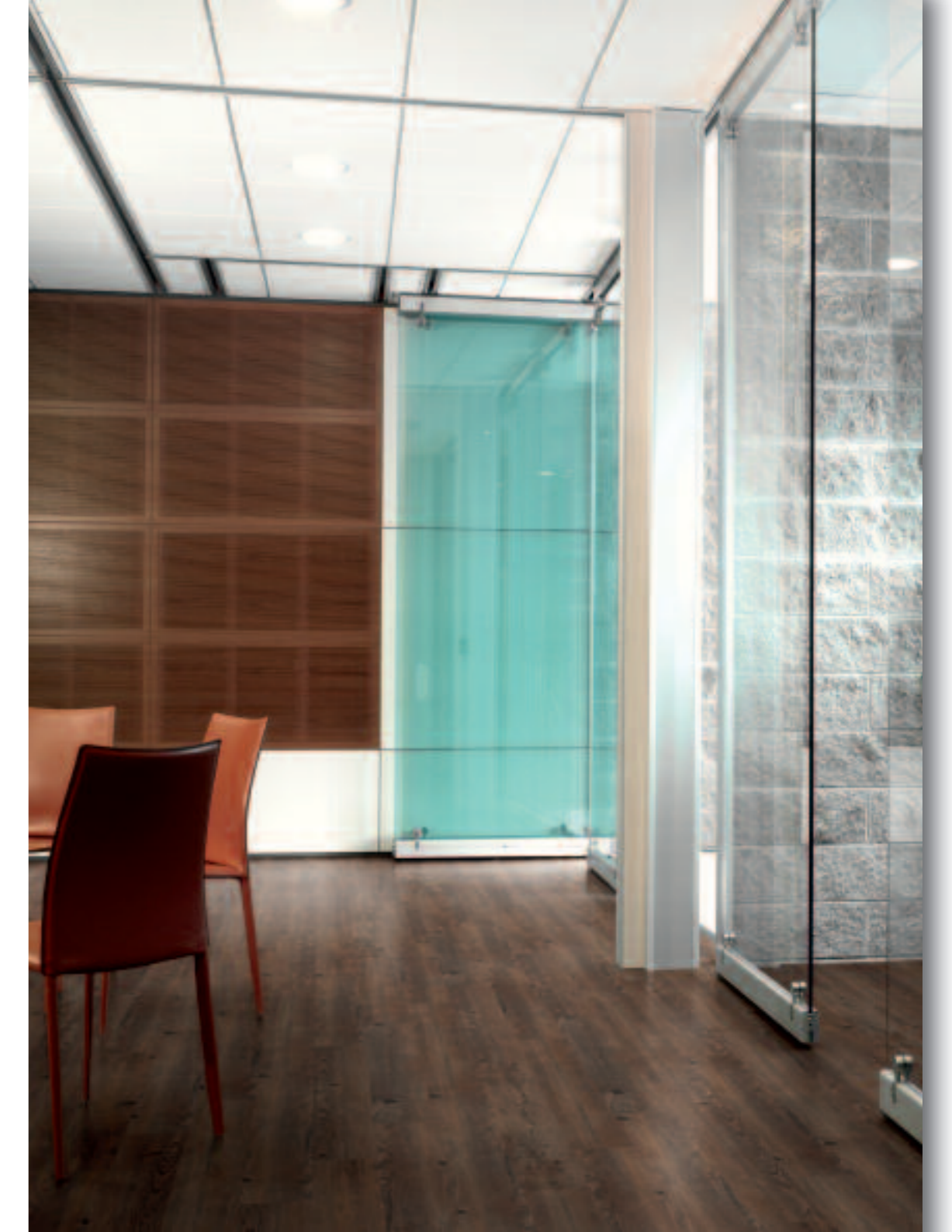
50073 American Walnut
50074 Burle Walnut
50318 Black Mangrove
50418 Walnut
52011 Weathered Ash
53030 Bramley Apple
53031 Olive Wood
53041 Appalacian Oak
51735 White Oak
53032 Morello Cherry

mFLOR Long Plank
 2.5mm with 0.55mm wearlayer x 15.24 cm x 121.92cm

- A range of authentic hardwood & fruitwood designs
- All individual pieces
- Anti-scuff urethane finish
- Micro-bevel edge for ease of cleaning
- EN685 usage category 42 – heavy duty flooring
- Suitable for commercial and home use
- Quiet, hardwearing & easy to keep clean
- 15 pieces per carton of 2.79 m²
- Suitable for underfloor heating to 30° C
- Very low VOC product for improved internal climate



Featured floors: above *Bramley Apple* with 3.4mm *Brown Feature Strip*, right *Weathered Ash*





56282 Water Oak



56283 Chinkapin



56284 Tanoak



56288 Scarlet Oak

mFLOR Authentic Oak
2.5mm with 0.55mm wearlayer x 22.86cm x 121.92cm

- Design registered to surface emboss – feel the grain of the wood
- Big plank format
- Anti-scuff urethane finish
- Micro-bevel edge for ease of cleaning
- EN685 usage category 42 – heavy duty flooring
- Suitable for commercial and home use
- Quiet, hardwearing & easy to keep clean
- 12 pieces per carton of 3.34 m²
- Suitable for underfloor heating to 30° C
- Very low VOC product for improved internal climate



Featured floors: above Chinkapin, right Tan Oak





53211 Camarque



53215 Anthracite



53219 Gris

mFLOR Contract Stone
2.5mm with 0.55mm wearlayer x 45.72cm x 45.72cm

- Riven Slate
- All individual pieces
- Anti-scuff urethane finish
- Micro-bevel edge for ease of cleaning
- EN685 usage category 42 – heavy duty flooring
- Suitable for commercial and home use
- Quiet, hardwearing & easy to keep clean
- 16 pieces per carton of 3.34 m²
- Suitable for underfloor heating to 30 degrees
- Very low VOC product for improved internal climate

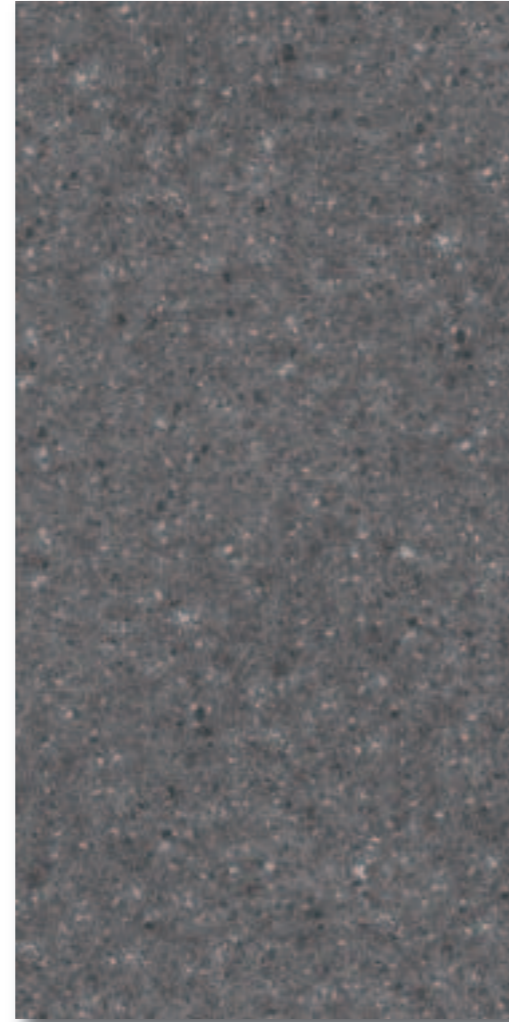


Featured floors: above Gris, right Camarque





56512 Grey



56516 Dark Grey

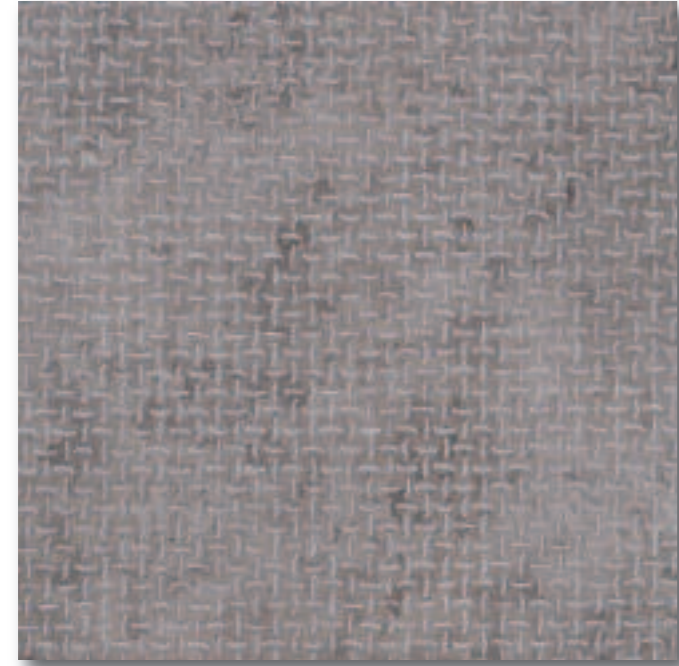
mFLOR Contract Concrete
2.5mm with 0.55mm wearlayer x 45.72cm x 91.44cm

- Original hand crafted design
- Larger tile format
- Anti-scuff urethane finish
- EN685 usage category 42 –heavy duty flooring
- Suitable for commercial and home use
- Quiet, hardwearing & easy to keep clean
- 8 pieces per carton of 3.34 m²
- Suitable for underfloor heating to 30° C
- Very low VOC product for improved internal climate

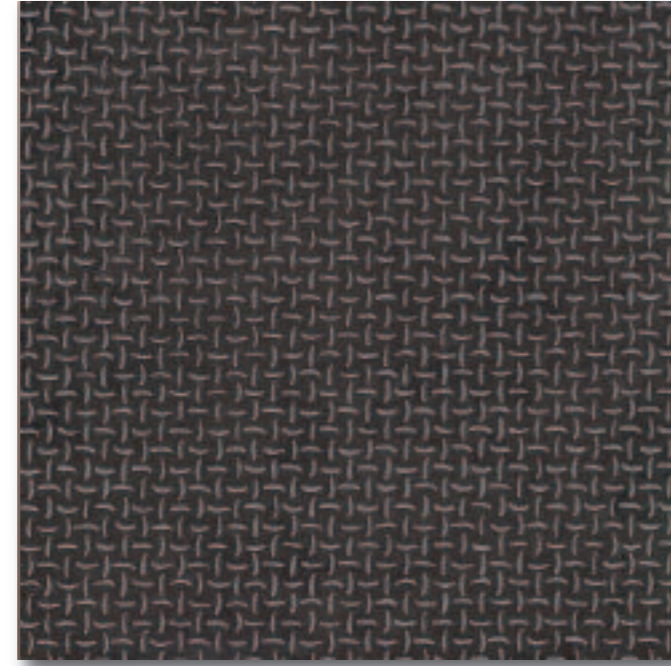


Featured floors: above Dark Grey, right Grey





52315 Grey



52318 Antracite

mFLOR Semaphore Plate
2.5mm with 0.55mm wearlayer x 45.72cm x 45.72cm

- Real steel floor look
- Design follows the surface emboss
- All individual pieces
- Anti-scuff urethane finish
- EN685 usage category 42 – heavy duty flooring
- Suitable for commercial and home use
- Quiet, hardwearing & easy to keep clean
- 16 pieces per carton of 3.34 m²
- Suitable for underfloor heating to 30° C
- Very low VOC product for improved internal climate



Featured floors: above Grey, right Antracite



Studio

Design your own floor

Selecting a floor from the photograph of a single piece as shown in this brochure can be difficult because each piece is different, it is the combined effect of different pieces which provides the feeling of the floor. Many woods vary in colour from piece to piece. A sample can help, but the same drawbacks apply. Nothing beats seeing the floor in a room setting.



To make this possible everyone one of the 107 designs which make up the MFLOR range have been scanned, not just a single piece, but enough pieces to make up the floor in a room setting. These pictures are now available at www.mflor.eu and can shown in a number of different settings; Livingrooms, Offices, Kitchens & Bathrooms, Retail stores. To better replicate the situation you are considering, the wall colours in many of the MFLOR studio scenes can now be changed, and if required Feature Strips can be added to the chosen flooring in all the available colours. In each category there are several different types of room décor available, which can be selected by the viewer.

Take a look at www.mflor.com.au and start to realise your dream.

Care and maintenance

JASOL CLEAN MOP, ULTRA FILM, SURFACE STRIPPER

Congratulations on the purchase of your new MFLOR luxury vinyl floor. Like any flooring a little care and maintenance will keep it looking great and performing for longer. This brochure explains the basic care procedures and offers a few helpful hints so you will get the best from your new floor

Products from our range have an advanced factory applied polyurethane surface coating. This gives them up to a 15 year surface wear warranty depending on the range. This polyurethane wear surface is designed with consideration to our busy lifestyles by being particularly scratch and stain resistant as well as quick and easy to maintain.

General Care and Maintenance

Sweep or vacuum the floor regularly to remove any grit or dirt that may scratch or mark the surface. It's a good idea to use good quality door mats to limit the amount of dirt and grit material carried into the house.

We have selected a range of cleaning products that have been specifically chosen and tested to perform best on our products. Jasol brand maintenance products are recommended.

Cleaning

Wash floor using a clean mop and Clean-Mop as per the directions, to clean the floor leaving a streak free finish.

Polish Application

Firstly wash floor as per above, then apply one or two thin coats of Ultra-Film as per the directions. MFLOR luxury vinyl flooring with polyurethane requires no initial or ongoing treatment of polish, so the use of Ultra-Film is for aesthetic purposes only, i.e. to increase the gloss appearance.

Polish Removal

Over a period of time, the build up of numerous coats of polish needs to be removed. Wash the floor with Surface-Stripper as per the directions.

NOTE: Use of other products in an attempt to maintain your floor may damage the floor, rendering the warranty null and void.

Maintenance products are available through your local Flooring retailer.

Care and Maintenance Suggestions

Whilst MFLOR luxury vinyls are rugged, they are not indestructible. Please note the following suggestions to ensure the longevity and performance of your new MFLOR Floor.

- Avoid gouging or scratching of the floor when moving heavy objects. Lift, walk or slide them into position on sheets of hardboard or plywood. The use of a trolley is recommended.
- Avoid heavy point loading on vinyl by ensuring furniture is fitted with suitable swivel glides or castors (not roller castors) with a large enough bearing surface to distribute the weight and prevent indentation of vinyl.
- Provide protective mats under all caster chairs, particularly at work stations.
- Do not use caustic or ammonia based cleaners. Do not use wax polish.
- Certain rubber products can permanently stain vinyl turning it a yellow colour. Always avoid extended contact with rubber products, such as rubber backed mats, rubber tips on furniture and certain types of shoe soles (particularly black rubber soles). Be also aware that some paving paints or bitumen carried onto vinyl may stain; likewise furniture stains can lead to various shades of discolouration.
- Fading of vinyl can be caused by ultraviolet light and heat from the sun, extreme exposure to sunlight through glass doors and windows must be avoided. Draw your drapes or shades during periods of peak sun exposure.
- Remember that any vinyl flooring can be damaged or scarred by cigarette burns, matches or other very hot items. Particular care should be taken with the use of heating appliances.

NOTE: MFLOR will not assume responsibility for failure of material caused by any of the above, or for incorrect installation or misuse of material. When in doubt, contact your place of purchase.

WARRANTY CERTIFICATE

Scope

Covered by this warranty are all the floor coverings in the MFLOR range intended for laying in domestic applications. The warranty applies to current ranges as stated in literature, brochures and samples or as printed on the material at the time of purchase.

Validity Period

The warranty's duration varies according to the products and may be up to 15 years depending on the qualities, and the use, as recommended by the distributor (Floating Floors Pty Ltd).

The start of the warranty is at the date of purchase for the covering by the consumer, shown on an invoice produced by the retailer, clearly mentioning the reference and the selection of the covering properties. The warranty covers the original purchaser only.

Warranty

The warranty applies only to products classified as perfects and used according to Floating Floors Pty Ltd specifications for domestic use.

The following is covered by the Floating Floors Pty Ltd warranty:

- Apparent defects, indicated to Floating Floors Pty Ltd or to the retailer prior to laying, such as: appearance defects, structure defects, indelible stains, defects on the backing other than back printing.
- Manufacturing defects, indicated to Floating Floors Pty Ltd or to the retailer during the warranty period, causing after a time an abnormal change such as early wear (beginning of the pattern legibility loss).

The following are excluded from the Floating Floors Pty Ltd warranty:

- Products sold in a quality other than perfects
- Defects caused by an installation which is not according to laying instructions given in the packing or specified by the manufacturer
- Mishandled products or products subjected to use other than domestic or unsuitably stored
- Products damaged during transportation outside Floating Floors Pty Ltd's responsibility or in any other way outside Floating Floors Pty Ltd's responsibility
- Products which are cut or laid with an apparent defect
- Products having been unsuitably maintained, in a way not complying with the maintenance instructions and specifications set out herein
- Products for which deterioration, leading to their replacement, is caused by under-floor unevenness
- Differences in colour, gloss and embossing structure between the products sold and pictures or samples and differences in manufacturing, including colour differences between different production batches
- Damage caused by stains, burns, cuts, grooves, friction, accidental indentation, loss of colour caused by carpet backs, painted surfaces, yellowing related to an external products (asphalt, tar, rubber,...)

- Damage caused by stiletto heels and unprotected legs of tables and chairs
- Defects and damage caused by circumstances outside Floating Floors Pty Ltd's control
- Loss of colour or damage caused by outside sources, including water leaks, flooding, heat, fire and very strong sunlight
- All products without a polyurethane wear layer can have discolouring caused by furniture rubber feet which is likely to leave indelible marks. Place rigid cups under the feet. Discolouring caused by the feet of waxed pieces of furniture is likely to leave indelible marks. Protect any sensitive parts with felt pads or rigid cups.

Condition of Application

Any defect shall be indicated to Floating Floors Pty Ltd or the retailer immediately after it is found. The defect shall be acknowledged after examination of the covering by a Floating Floors Pty Ltd representative or a duly qualified authorised agent. Floating Floors Pty Ltd reserve their right to require a sample showing the defect for the purpose of further analysis.

Condition of Compensation

For any defect found on a product covered by this warranty and conforming to the criteria of cover and application, and further to the file being accepted by the concerned Floating Floors Pty Ltd department, a form of compensation shall be granted.

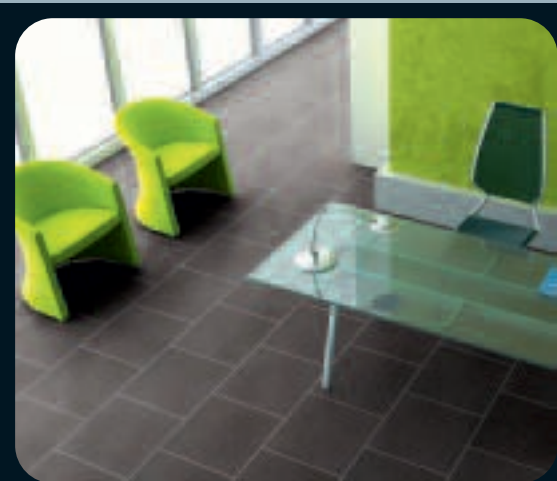
Such compensation covers the purchase price for the covering, excluding the taking up cost, the installation dismantling cost (partition, furniture,...) the cost of laying and of material possibly used for laying (glue, skirting boards,...) and is broken down as follows:

Period after purchasing, during which the defect was found	Rate of reimbursement for the covering
15 years domestic – 25-05	
≤ 3 years	100%
≤ 6 years	80%
≤ 9 years	60%
≤ 12 years	40%
≤ 15 years	20%
10 Year domestic – 20-03	
≤ 3 years	100%
≤ 6 years	80%
≤ 8 years	60%
≤ 10 years	40%
7 Year domestic – 20-02	
≤ 1 years	100%
≤ 3 years	80%
≤ 7 years	60%

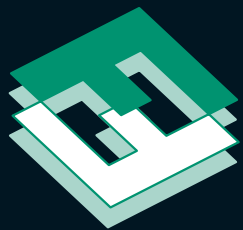
For products with 5 and 8 year limited commercial / industrial warranties, warranties available upon application.

Important Please note the colour reproduction in this brochure may differ from samples or purchased product. Also due to natural variations some design elements, such as colour variation, timber grains or knots may vary between individual planks and occasionally may not be included in either the brochure image or product sample. As a consequence this brochure or individual product samples may not give a true representation of the completed flooring.

mFLOR™



COLLECTIONCOLECCIONKOLLEKTIONCOLLECTIECOLLECTIONCOLECCIONKOLLEKTIONCOLLECTIECOLLECTIONCOLECCIONKOLLEKTIONCOLLECTIECOLLECTIONCOLECCIONKOLLEKTIONCOLLECTIE



FLOATING FLOORS

Victoria – Head Office: Floating Floors Pty Ltd, 14-16 Lakewood Boulevard, VIC 3195
Postal Address: Post Office Box 505, Braeside 3195 Phone: (03) 9587 4344 Fax: (03) 9587 5700

New South Wales Phone: (02) 9624 8933 Fax: (02) 9674 6170

Queensland Phone: (07) 3205 6280 Fax: (07) 3205 6394

South Australia Phone: (08) 8346 6800 Fax: (08) 8346 8695

Western Australia Phone: (08) 9434 4128 Fax: (08) 9434 4820

Tasmania Phone: (03) 9587 4344 Fax: (03) 9587 5700